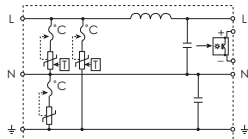
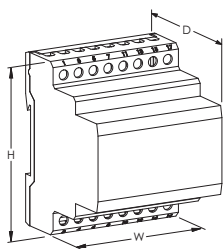


# Transient Discriminating Filter – TDF20A240V (700006)



- Transient Discriminating (TD) Technology provides increased service life
- In-line series protection
- High-efficiency low-pass sine wave filtering is ideal for the protection of switched mode power supplies
- Three modes of protection: L-N, L-PE and N-PE
- LED status indication and opto-isolated output for remote status monitoring



Part Number	TDF20A240V
Article Number	700006
Rated Load Current (IL)	20 A
Nominal System Voltage (Un)	220 - 240 V
Max Continuous Operating Voltage (Uc)	340 VAC
Stand-off Voltage	400 V
Frequency	50 – 60 Hz
Max Discharge Current (Imax), L-N	20 kA 8/20 μs
Max Discharge Current (Imax), L-PE	20 kA 8/20 μs
Max Discharge Current (Imax), N-PE	10 kA 8/20 μs
Voltage Protection Rating (VPR)	700.0 V @ 500 A 600.0 V @ 3 kA
Back-Up Overcurrent Protection	20 A
Filtering	-53 dB @ 100 kHz
Distribution System	1Ph 2W+G
Protection Modes	All modes protected
Connection, Solid	1 – 6 mm <sup>2</sup>
Connection, Stranded	1 – 6 mm <sup>2</sup>
Mounting	35 mm top hat DIN rail
Status Indication	LED
Enclosure Material	UL® 94V-0 thermoplastic
Enclosure Rating	IP 20 NEMA®-1
Temperature	-35 to 55 °C



## Thiết bị lọc sét 1 pha 20A TDF-20A-240V

Part Number	TDF20A240V
Module Width	8 M
Depth (D)	68 mm
Height (H)	90 mm
Width (W)	144 mm
Unit Weight	1.57 kg
Certification Details	UL® 1449 Edition 3 Recognized Component Type 2 UL® 1283
Complies With	ANSI®/IEEE® C62.41.2-2002 Cat A, Cat B, Cat C
Certifications	CE C-Tick cURus
Standard Packaging Quantity	1 pc
UPC	78285644040
EAN-13	8711893014716

ANSI is a registered trademark of American National Standards Institute. IEEE is a registered trademark of The Institute of Electrical and Electronics Engineers, Inc. NEMA is a registered service mark of National Electrical Manufacturers Association. UL, UR, cUL, cUR, cULus and cURus are registered certification marks of UL LLC.

#### WARNING

ERICO products shall be installed and used only as indicated in ERICO's product instruction sheets and training materials. Instruction sheets are available at [www.erico.com](http://www.erico.com) and from your ERICO customer service representative. Improper installation, misuse, misapplication or other failure to completely follow ERICO's instructions and warnings may cause product malfunction, property damage, serious bodily injury and death.

Copyright © 2015 ERICO International Corporation. All rights reserved.

CADDY, CADWELD, CRITEC, ERICO, ERIFLEX, ERITECH, and LENTON are registered trademarks of ERICO International Corporation.

**[www.chongset.com](http://www.chongset.com): Nhà phân phối Thiết bị chống sét TDF-20A-240V. Hiệu: Erico - Critec. Hotline: 0869 278 279**



**ERICO®**